

CITY OF KELOWNA

BYLAW NO. 9249

Road Closure and Removal of Highway Dedication Bylaw **Redlich Road – Adjacent to 1570 KLO Road**

A bylaw pursuant to Section 40 of the Community Charter to authorize the City to permanently close and remove the highway dedication of a portion of highway on Redlich Road

NOW THEREFORE, the Municipal Council of the City of Kelowna, in open meeting assembled, hereby enacts as follows:

1. That portion of highway attached as Schedule "A" comprising 0.216 Ha shown in bold black as Closed Road on the Reference Plan prepared by Thomas E. Ferguson B.C.L.S. and completed on 14 day of June, 2004, is hereby stopped up and closed to traffic and the highway dedication removed.
2. The Mayor and City Clerk of the City of Kelowna are hereby authorized to execute such conveyances, titles, survey plans, forms and other documents on behalf of the said City as may be necessary for the purposes aforesaid and to affix the Corporate Seal of the said City thereto.

Read a first, second and third time by the Municipal Council this 21st day of June, 2004.

Adopted by the Municipal Council of the City of Kelowna this

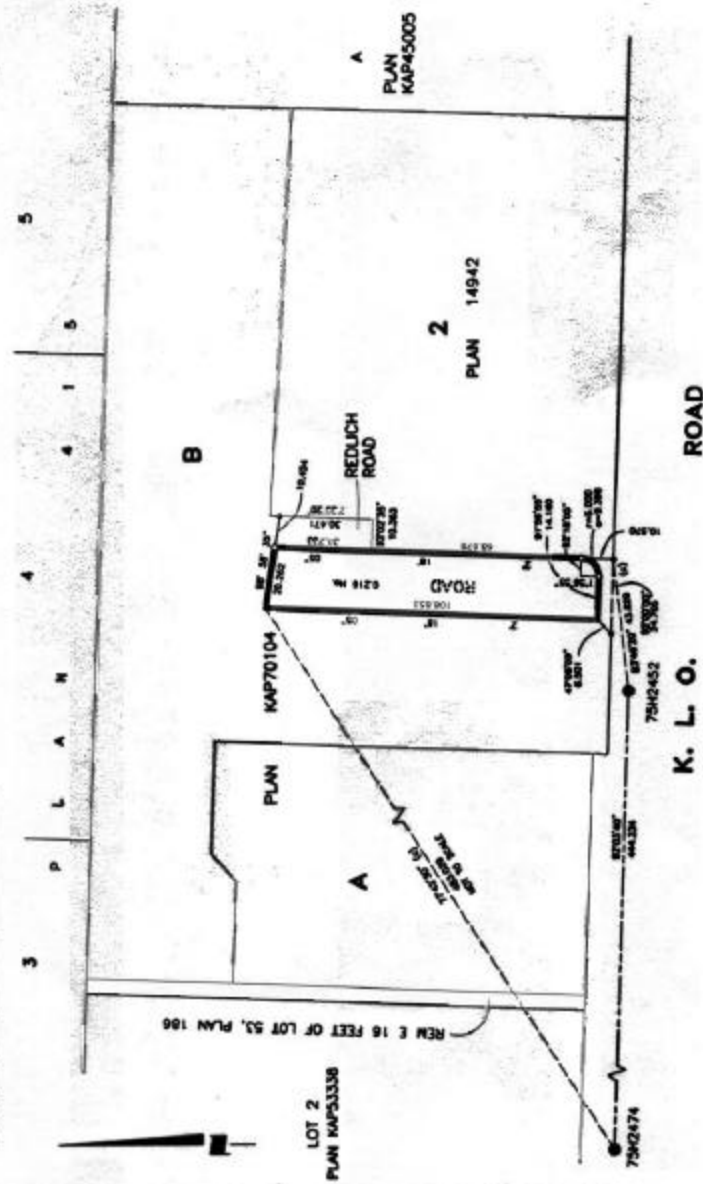
Mayor

City Clerk

PLAN TO ACCOMPANY CITY OF KELOWNA ROAD CLOSURE AND REMOVAL OF HIGHWAY DEDICATION BY-LAW NO. 9249, OF PART OF REDLICH ROAD, DISTRICT LOT 131, O.D.Y.D.

PURSUANT TO SECTION 120 OF THE LAND TITLE ACT AND SECTION 40 OF THE COMMUNITY CHARTER
B.C.G.S. 82E.083
SCALE: 1:1000-METRES **REDUCED**

100 METRES



LEGEND

ORD MEASUREMENTS ARE DERIVED FROM OBSERVATION
BETWEEN CONTROL MONUMENTS 7504442 AND
7504443. MONUMENT 7504442 IS A CONCRETE
PILAR. MONUMENT 7504443 IS A CONCRETE
PILAR. THE PLAN SHOWS THE LEVEL MEASURED
DISTANCES PRIOR TO COMPUTATION OF U.T.M.
COORDINATES MULTIPLY BY CORRECTION
FACTOR 0.99993.

● SHORTS CONTROL MONUMENT
○ SHORTS CONTROL MONUMENT
○ SHORTS STANDARD ROCK POST SET

THIS PLAN LIES WITHIN THE REGIONAL DISTRICT OF
CENTRAL OKANAGAN

I, THOMAS E. FERGUSON, A REGISTERED LAND
SURVEYOR OF THE CITY OF KELOWNA IN BRITISH
COLUMBIA, CERTIFY THAT I WAS PRESENT AT AND
SUPERVISED THE SURVEYING AND THE MEASUREMENTS
HEREIN DESCRIBED BY THIS PLAN, AND THAT THE SURVEY
AND PLAN ARE CORRECT. THE FIELD SURVEY WAS
COMPLETED AND CHECKED ON THE 14TH
DAY OF JUNE, 2004.

Thomas E. Ferguson
B.C.L.S.

T.E. Ferguson Land Surveying Ltd.
815-1024 STREET
210-1024 STREET, KELOWNA, B.C.
TELEPHONE (250) 763-2113
FAX (250) 763-2111

JOB NO. 15859